

JAPAN FOUNDATION



Cultivating friendship and ties between Japan and the world

The Japan Foundation is Japan's only institution dedicated to carrying out comprehensive international cultural exchange programs throughout the world. With the objective of deepening mutual understanding between the people of Japan and other countries/regions, our various activities and information services create opportunities for people-to-people interactions.

1970s

- 1972 The Japan Foundation established
- 1973 Established the Japan Foundation Awards
- 1975 Released the first Survey Report on Japanese-Language Education Abroad
- 1976 Commenced Asian Traditional Performing Arts (ATPA) program
- 1978 Dispatched a football team to Southeast Asian countries for the first time
- 1979 Sent a Kabuki troupe to China - the first cultural exchange project under government auspices

1980s

- 1981 "The Great Japan Exhibition: Art of the Edo Period, 1600-1868" (U.K.)
- 1982 Takarazuka Revue Company Southeast Asia tour
- 1984 Held the first Japanese-Language Proficiency Test (JLPT) overseas
- 1985 Established Beijing Center for Japanese Studies (China)
Established the Japan Foundation Prizes for the Promotion of Community-Based Cultural Exchange (Renamed the Japan Foundation Prizes for Global Citizenship in 2005)
- 1989 Established the Japan Foundation Japanese-Language Institute, Urawa (Saitama)

1990s

- 1990 Established the Japan Foundation ASEAN Culture Center
- 1991 Established the Japan Foundation Center for Global Partnership (CGP)
- 1992 Commenced The Japanese-Language Exchange (JALEX) program
- 1994 A triple production of Noh, Bunraku, and Kabuki versions of "Shunkan" in Europe
- 1995 The Japan Foundation ASEAN Culture Center reorganized as the former Asia Center (until 2004)
- 1996 Japan Pavilion at the International Architecture Exhibition, Venice Biennale won the Golden Lion award for the best national participation
- 1997 Established the Japan Foundation Japanese-Language Institute, Kansai (Osaka)
Established the Japan Cultural Institute in Paris
- 1998 "JOMON: Origins of Japanese Art" (France)

JF develops programs in three different fields



Creating opportunities to engage in the values and virtues embodied in art and life



The more people learn Japanese, the deeper their understanding of Japan becomes



The key to resolving issues shared globally lies where deep understanding of Japan and communication with the world meet

2000s

- 2001 Co-organized the first Yokohama Triennale 2001
- 2002 Commenced the Japan Outreach Initiative (JOI)
- 2003 Commenced the Special Programs for Japan-Middle East Exchange
- 2005 The first Arab Film Festival in Japan
- 2006 Established the Japan Foundation China Center

Japan-U.S. Dialogue for cooperation in reconstruction after Hurricane Katrina

Held a symposium and workshops "A Wild Haruki Chase: How the World is Reading and Translating Murakami"
- 2007 Organized performing arts workshops for children in Aceh for peace-building through culture (Indonesia)

2010s

- 2010 Released "JF Standard for Japanese-Language Education"
- 2011 Initiatives relating to reconstruction after the Great East Japan Earthquake
- 2012 The Japan Pavilion won the Golden Lion award for the second time at the International Architecture Exhibition, Venice Biennale
- 2014 Established the Japan Foundation Asia Center
- 2018 "Japonismes 2018: les âmes en résonance" (France)
- 2019 "Asia in Resonance 2019"

"Japan 2019" (U.S.)

Commenced Japan Foundation Test for Basic Japanese (JFT-Basic)

2020s

- 2020 JAPANESE FILM FESTIVAL ONLINE

Commenced JF digital collection
- 2022 50th anniversary of the Japan Foundation
- 2023 50th anniversary of the Japan Foundation Awards



Culture

Arts and Cultural Exchange

- We offer a diverse range of Japanese culture and arts to the rest of the world, including theater, music, dance, fine art, architecture, design, literature, film, and television. Through culture and art, we convey the spirit of Japan to people around the world, increase empathy and friendships that transcend differences in languages and customs, and also share in the joy of creation while deepening our interactions with others.

CONTACT

Arts and Culture Dept.
Film and Broadcast Media Dept.



**Between Collectivism and Individualism
- Japanese Avant-Garde in the 1950s and 60s**

Zachęta – National Gallery of Art (Warsaw) 2021

photo: Jakub Celej / Zachęta Archive, CC BY-SA. 40 International

Introducing the Rich Culture of Japan to the World

We aim to introduce the wealth of Japanese culture and art to people around the world and increase other countries' understanding of Japan through a wide range of attractive programs, from traditional all the way to contemporary, including performing arts, exhibitions, literature, film, and television. On important occasions such as diplomatic anniversaries, we organize large-scale Japanese cultural events, and develop continuous and efficient projects for a broad and worldwide audience. In addition to a number of on-site projects in various locations, we also distribute a wide range of content online and on our website.

Creating a Foundation for Promoting Exchange in the Fields of Arts and Culture

We create the foundations for promoting cultural and artistic exchange by building on exchanges and collaborations among specialists from various countries and regions. We aim to build a network that underpins exchange and support individuals behind those exchanges by creating dialogue and joint venture activities which transcend national boundaries. This involves inviting and dispatching experts in various fields, such as museum curators, theater and festival directors, publishing editors and translators, or film directors. We also collect information on Japanese culture and the arts, and share them online.



"SAMBASO, divine dance"
performed by Mansai Nomura

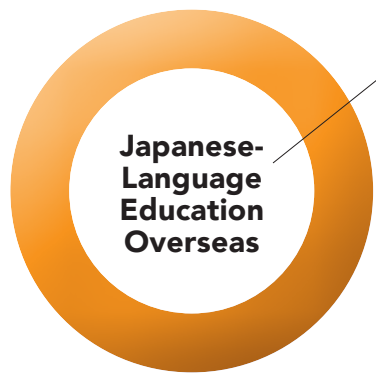
© KOS-CREA

Théâtre de la Ville – Espace Cardin (Japonismes 2018)





Language



**Japanese-Language
Education
Overseas**

Increasing familiarity with the Japanese language for people overseas helps to spread affection for and understanding of Japan throughout the world. We encourage high-quality, stable environments for Japanese-language education overseas through dispatching Japanese-Language Specialists and providing training programs in collaboration with government agencies and Japanese-Language education institutions around the world. We also disseminate information about Japanese-Language teaching methods and provide teaching materials, and implement Japanese-Language tests that measure the Japanese-language proficiency of Japanese-language learners.

CONTACT

Japanese-Language Dept./II
NIHONGO Partners Program Dept.
Center for Japanese-Language Testing
The Japan Foundation Japanese-Language Institute, Urawa
The Japan Foundation Japanese-Language Institute, Kansai



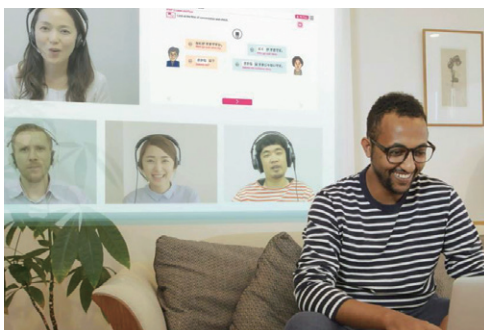
Establishing Environments for Japanese-Language Education Overseas

We promote the establishment of Japanese-Language education environments overseas through a variety of programs, such as dispatching Japanese-Language Specialists to provide guidance and advice to local educational institutions, offering training programs, supporting Japanese language promotion activities, and creating networks. In addition to face-to-face learning classes and training programs, we also offer a wide range of online content for teachers and learners. Likewise, we dispatch Japanese citizens through our NIHONGO Partners program to support Japanese-Language learning, mainly in Southeast Asia.



Enhancing Teaching Methods and Proficiency Assessments, and Offering Online Japanese-Language Learning Platforms

We develop curriculums and teaching materials based on the JF Standard for Japanese-Language Education, as well as offering Japanese-Language learning opportunities through our online platform “JF Japanese e-Learning Minato.” We also measure and provide certification of the Japanese-language proficiency of non-native Japanese-language learners. There are two tests available: the Japanese-Language Proficiency Test (JLPT), the largest of its kind in the world, and the Japan Foundation Test for Basic Japanese (JFT-Basic), which measures the Japanese language proficiency necessary for communication in everyday life situations in Japan.





Dialogue

Japanese Studies and Global Partnerships Programs

- Supporting Japanese studies abroad and sustaining dialogue with the rest of the world increases mutual understanding and trust, and leads to global collaboration and human networks that can solve common issues. In addition to supporting Japanese studies overseas, we also contribute to human resource training and develop exchange programs that promote dialogue at various levels, from collaborations on common themes that transcend borders, to exchanging mutual understanding between citizens and youth, all to stimulate interest in Japan, and a deeper understanding of Japan around the world.

CONTACT

Japanese Studies Dept.
Global Partnerships Dept.



Promoting and Supporting Japanese Studies Overseas

We are committed to fostering future experts and improving the foundation for Japanese studies overseas. We provide fellowships for overseas Japanese researchers to conduct studies in Japan and provide support to Japanese research institutions overseas, such as through visiting professorships, research and conference grants, or library support. We also support academic societies of Japanese studies around the world and provide opportunities for dialogue across borders, such as through international conferences and joint workshops, to enhance the global network of Japanese studies scholars and expand upon Japanese studies.



International Dialogue and Networking

We engage in dialogue and network building on common global issues surrounding the themes of "building a resilient society," "developing an inclusive society," and "creating a society enriched by science and technology" by holding international symposiums, seminars, and workshops. We build human networks by inviting and dispatching personnel around the world. We also engage in pioneering dialogue projects aimed at creating and sharing new values. Furthermore we offer citizen and youth exchange programs and capacity building programs that serve as the foundation for future exchanges.





Online Programs

JF Digital Collection

This is a portal site featuring a variety of online projects produced by the Japan Foundation. Content relating to Japanese performing arts, visual arts, film, lifestyle and Japanese-Language education is available in multiple languages.



Content (example)

Category	Title	Contents
Performing Arts	STAGE BEYOND BORDERS — Selection of Japanese Performances —	Outstanding Japanese stage performances, from contemporary theater and dance to traditional Japanese performing arts. Subtitles available in multiple languages.
Film	JAPANESE FILM FESTIVAL ONLINE	Stream Japanese films with subtitles in up to 15 languages on Japanese Film Website JFF+, along with plenty of special features and news articles.
Visual Arts	Traveling Exhibitions	A series of short videos that introduces the themes of Traveling Exhibitions, such as “Yokai,” “Japanese Dolls,” and “Netsuke” carvings.
Creative Dialogue	Alone Together — Reimagining International Exchange in post-COVID Japan	Foreign researchers discuss Japanese society in the midst of the COVID-19 pandemic from the perspectives of their respective fields of expertise.
Japanese Language Education	Online Japanese-Language Education Programs	Introduces various online Japanese-language education programs conducted by the Japan Foundation overseas offices and Japanese-Language Specialists around the world.

Awards and Prizes

The Japan Foundation Awards

These awards are given to individuals or organizations that have made particularly outstanding contributions towards promoting international mutual understanding, friendship, and goodwill through academic, artistic, or other cultural endeavors, and whose activities are expected to continue into the future.



The Japan Foundation Prizes for Global Citizenship

These awards are given to organizations that deepen ties and cooperation between Japanese and foreign citizens, and that exchange wisdom, ideas, and information with each other through international cultural exchange activities rooted in local communities throughout Japan.



Library

The Japan Foundation Library collects and makes available to the public information and materials relating to international cultural exchange and Japanese culture. The following materials are held by the library (approximately 36,000 books).



- JF publications, newspaper clippings, etc.
- Books, magazines, and video materials relating to international cultural exchange
- Books, journals, and audiovisual materials on Japan in foreign languages
- Translations of Japanese literary works

The library is open to everyone. Loan services are available, and assistance can be provided in locating materials and finding information. You can search the library's collection at: <https://lib-opac.jpfd.go.jp/drupal/en>

Opening Days

Monday to Friday

*Please check the website for the latest information before visiting.

Closing Days

Saturdays, Sundays, public holidays, New Year's holidays, and inventory period

The Japan Foundation Library

Tel. 03-5369-6086

Email. Lib@jpf.go.jp



The Japan Foundation has 26 overseas offices in 25 countries. It is active throughout Asia, Oceania, the Americas, Europe, the Middle East and Africa, and works closely with Japanese diplomatic missions and other related organizations in each country.



- ① The Japan Cultural Institute in Rome
- ② The Japan Cultural Institute in Cologne
- ③ The Japan Cultural Institute in Paris
- ④ The Japan Foundation, Seoul
- ⑤ The Japan Foundation, Beijing
- ⑥ The Japan Foundation, Jakarta

- ⑦ The Japan Foundation, Bangkok
- ⑧ The Japan Foundation, Manila
- ⑨ The Japan Foundation, Kuala Lumpur
- ⑩ The Japan Foundation, Yangon
- ⑪ The Japan Foundation, New Delhi
- ⑫ The Japan Foundation, Sydney
- ⑬ The Japan Foundation, Toronto



- 14 The Japan Foundation, New York
- 15 The Japan Foundation, Los Angeles
- 16 The Japan Foundation, Mexico
- 17 The Japan Foundation, São Paulo
- 18 The Japan Foundation, London
- 19 The Japan Foundation, Madrid
- 20 The Japan Foundation, Budapest

- 21 The Japan Foundation, Moscow
- 22 The Japan Foundation, Cairo
- 23 The Japan Foundation Center for Cultural Exchange in Vietnam
- 24 The Japan Foundation, Phnom Penh Liaison Office
- 25 The Japan Foundation, Vientiane Liaison Office
- 26 The Japan Foundation, Lima

The Japan Foundation Headquarters

The JF headquarters includes the following departments: General Affairs, Financial Affairs, Planning, Arts and Culture, Film and Broadcast Media, Japanese-Language I/II, NIHONGO Partners Program, Center for Japanese-Language Testing, Japanese Studies, Global Partnerships, Public Relations and the Audit Bureau. It also houses a library and an event space.

Headquarters

YOTSUYA CRUCE, 1-6-4 Yotsuya, Shinjuku-ku, Tokyo 160-0004

CONTACT Tel. 03-5369-6075 Email. jf-toiawase@jpf.go.jp

Center for Japanese-Language Testing

7th Floor, 4-3 Yotsuya, Shinjuku-ku, Tokyo 160-0004

CONTACT Email. jlptinfo@jpf.go.jp



The Japan Foundation Japanese-Language Institute, Urawa

Established in 1989, the Institute is a training facility for Japanese-Language educators. It provides training for international Japanese-Language teachers, develops teaching materials, and provides information on Japanese-Language teaching methods.

5-6-36 Kita-urawa, Urawa-ku, Saitama-City, Saitama 330-0074

CONTACT Tel. 048-834-1180 Email. urawakenshu@jpf.go.jp

LIBRARY Tel. 048-834-1185 Email. jfnclib@jpf.go.jp



The Japan Foundation Japanese-Language Institute, Kansai

Established in 1997, the Institute is a training facility for Japanese Language learners. It provides professional Japanese-language training for diplomats, public officers and researchers from various countries, and short-term study programs for Japanese-Language learners. Also, it develops various e-learning materials.

3-14 Rinku Port Kita, Tajiri-cho, Sennan-gun, Osaka 598-0093

CONTACT Tel. 072-490-2600 Email. jpf-kansai@jpf.go.jp

LIBRARY Tel. 072-490-2605 Email. k_lib@jpf.go.jp



Kyoto Office

Kyoto office promotes exchanges between Japanese studies experts invited by the Japan Foundation and citizens of Kyoto, as well as conducts activities to promote further understanding of Japan among foreign students and researchers. It also advises and cooperates with the activities of international exchange groups in Kansai region and with the overseas activities of local cultural organizations.

3rd Floor, Kyoto International Community House

2-1 Torii-cho, Awataguchi, Sakyo-ku Kyoto, 606-8436

CONTACT Tel. 075-762-1136



Websites and Social Media

The Japan Foundation Website <https://www.jpf.go.jp/e/>

- **YouTube** <https://www.youtube.com/user/thejapanfoundation/>
- **Facebook** <https://www.facebook.com/TheJapanfoundation/>
- **Twitter** <https://twitter.com/japanfoundation/>

Online Content (Videos, Reading Material)

- **JF digital collection** https://www.jpf.go.jp/e/project/digital_collection/
- **Web Magazine Wochi Kochi** <https://www.wochikochi.jp/english/>
- **Performing Arts Network Japan (PANJ)** <https://performingarts.jpf.go.jp/>
- **Japanese Film Website JFF+** <https://jff.jpf.go.jp/>

Information on Japanese-Language Education

TESTS

- **The Japanese-Language Proficiency Test (JLPT)** <https://www.jlpt.jp/e/>
- **The Japan Foundation Test for Basic Japanese (JFT-Basic)** <https://www.jpf.go.jp/jft-basic/e/>

SUPPORT FOR JAPANESE-LANGUAGE TEACHERS

- **Teach Japanese-Language** <https://www.jpf.go.jp/e/project/japanese/teach/>

SUPPORT FOR JAPANESE-LANGUAGE LEARNERS

- **Learn Japanese-Language** <https://www.jpf.go.jp/e/project/japanese/education/>

INFORMATION OF JAPANESE-LANGUAGE EDUCATION

- **Know About Japanese-Language Education Abroad** <https://www.jpf.go.jp/e/project/japanese/survey/>

Resources/Databases

TRANSLATION & PUBLISHING

- **Japanese Literature in Translation Search** <https://jltrans-opac.jpf.go.jp/>
- **Worth Sharing —A Selection of Japanese Books Recommended for Translation**
<https://www.worthsharing.jpf.go.jp/en/>

FILM

- **Japanese Film Database (JFDB)** <https://jfdb.jp/en/>

Donations

The Japan Foundation accepts donations to promote international cultural exchange in a variety of ways. It is a Designated Public Benefit Organization, and all donations are eligible for taxation benefits.

We receive ongoing support through our Corporate Membership System (Sanjo-Kai), as well as discretionary donations, such as donations for program expenses and donations to operational funds (private endowments).

We also run a Designated Donations Program to make donations to international cultural exchange programs conducted by non-JF entities that are eligible for tax benefits.

The Japan Foundation

Headquarters: 1-6-4 Yotsuya, Shinjuku-ku, Tokyo 160-0004

Tel. 03-5369-6075 Fax. 03-5369-6044

Email. jf-toiawase@jpf.go.jp

<https://www.jpf.go.jp/e/>

